

Manufacturer &
Developers Of Auto Mobile
& Tractors Parts

QUALITY THAT INSPIRES
THE EXCELLENCE



RAZZAQ
ENGINEERING WORKS

COMPANY PROFILE

Razzaq Engineering Works was established in the year 1986. We are the leading Gear Manufacturers of Pakistan with the vision to lead the technology contest by serving quality products at reasonable prices.



Under the active management and attention of our **MD, Mr. Hamid Razzaq**, we have attained a commendable position in the market. Moreover, we are dealing in range of products such as Earthmoving Machinery Parts, Industrial components.



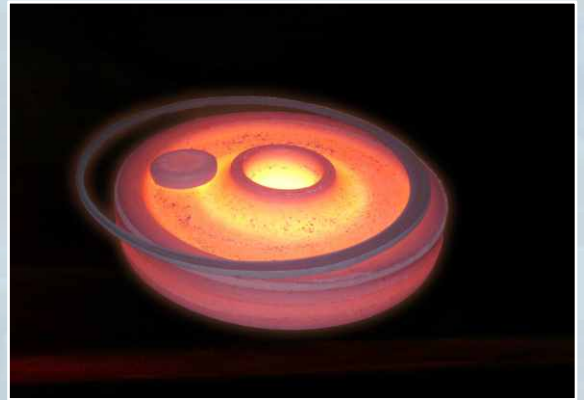
FORGINGS

We Produce a maximum capacity of 10 kg per piece.

HEAT TREATMENT & FERROUS METALS

Razzaq Engineering can make Gears in any and all types of machinable materials including: 8620, usually carburized and hardened

4140 4150 4340 1045 8620 20MnCr5 1018 1020



and other high intensity alloy steel . We use different kinds of excellent Alloy Steel, Carbon Steel or any as per customer requirement. We believe, the qualified raw material is a key factor of qualified gear. We offer the following heat treatment for the steel gear:

- | | |
|--------------------------|----------------|
| 1. Superficial Quenching | 5. Normalizing |
| 2. Quenching Carburizing | 6. Tempering |
| 3. Carburizing | 7. Annealing |
| 4. Thermal Refining | |

Special Materials

If you require a special raw material, feel free to contact us and we'll be glad to assess its viability for your specific requirements

Casting

Common types of cast iron include:
Ductile Gray Durabar Grades



MACHINING

We own a state-of-the-art infrastructure that is outfitted with the highly advanced machineries and testing equipments. Our manufacturing unit is divided into different sections such as



- Casting and Forging
- CNC Machining
- Gear Cutting
- Heat Treatment Section
- Grinding



Each unit is well equipped with latest machines to aid in the manufacturing process and come up with automobile parts and components with out any error.

Some of the machines, which we have installed in different units to assist the manufacturing process, are

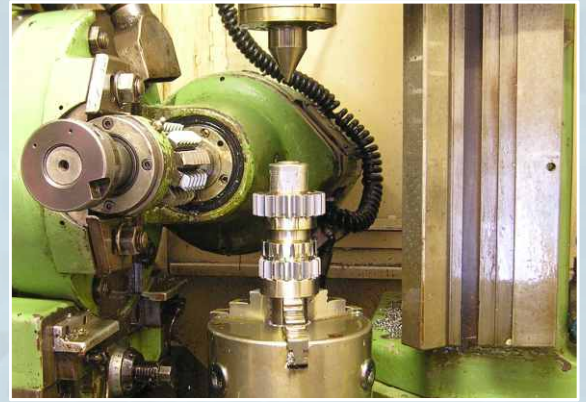


- Turning
- Gear Cutting Machines
- Grinding Machines
- Induction Hardening and Heat Treatment
- Lathe Machines



GEARS MANUFACTURING

We have a state-of-the-art infrastructure, which is spread across a wide area and is segregated into varied units for undertaking different processes of forging, casting, machining etc.



DESIGN

Our work includes:

- Drafting
- Solid modeling
- Gear performance analysis with several software tools including an in-house developed program
- Structural and fatigue analysis
- Wall thickness optimization
- Overseeing prototype development and initial production runs



QUALITY ASSURANCE

Quality is the key of our organization and we therefore, never compromise on quality. We, being a quality driven enterprise, abide by quality practices and engineer products using latest production techniques.



Besides this, all our products undergo strict quality tests under various parameters to keep pace with international quality standards.

Facilities

- Lead and Profile Tester Machine
- Gear Rolling Testing Machine
- Rockwell Hardness Tester Machine
- Diameter Run Out Tester Machine
- Profile Projector
- Coordinate Measuring Machine (CMM)





Massey Ferguson Tractor Parts

1. GEAR MAIN SHAFT LOW
2. MAIN SHAFT
3. GEAR PLANETARY
4. COUNTER SHAFT
5. INPUT SHAFT
6. PINION ASSY PTO



GEAR PLANETARY RING





New Holland (Fiat) Tractor Parts

1. GEAR DRIVEN 1ST, 2ND
2. GEAR DRIVEN REVERSE
3. SHAFT MASTER CLUTCH
4. SHAFT PTO DRIVEN GEAR
5. GEAR DRIVEN 1ST
6. SHAFT DRIVEN GEAR



GEAR PLANETARY





Ford Tractor Parts

1. COUPLING -DL
2. COUPLING
3. SLEEVE PTO
4. SPINDLE ASSY
5. SHAFT PTO INPUT
6. SHAFT INPUT



GEAR COUNTER SHAFT





(7)



(8)

Ford Tractor Parts

- 7. COUNTER SHAFT
- 8. RETAINER PLATE
- 9. REAR AXEL SHAFT
- 10. GEAR
- 11. SHAFT
- 12. MAIN SHAFT



SPIDER CASE ASSY



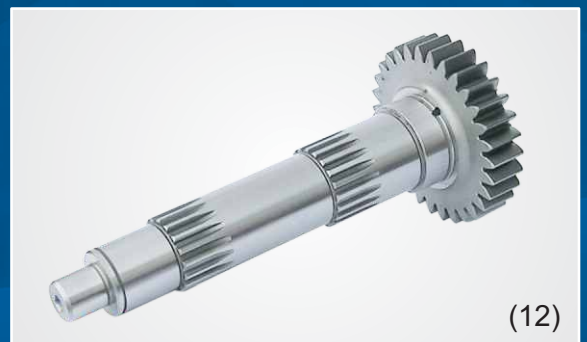
(9)



(10)



(11)



(12)



Motorcycle Parts

1. GEAR COUNTER SHAFT 3RD
2. GEAR COUNTER SHAFT 3RD T27
3. GEAR COUNTER SHAFT 4TH 24T
4. GEAR COUNTER SHAFT 1ST
5. GEAR MAIN SHAFT 3RD
6. GEAR MAIN SHAFT 2ND 16T



GEAR COUNTER SHAFT 2ND





Auto Rickshaw Parts

1. SHAFT
2. DIFFERENTIALS
3. FRONT HUB FOR 4 STOCK RICKSHAW
4. STARTER GEAR FOR BAJAJ
AUTO RICKSHAW
5. DOUBLE GEAR
6. CROWN WHEEL & PINION



WHEEL DRUM





Front Engine Parts Auto Rickshaw

- 7. AXLE SHAFT
- 8. FRONT HUB
- 9. 1ST GEAR
- 10. 2ND GEAR
- 11. 3RD GEAR
- 12. 4TH GEAR





Rear Engine Parts Auto Rickshaw

1. COUPLER FOR AXLE
2. COUPLER FOR ENGINE
3. CROWN WHEEL SPIDER CASE
4. STAR
5. SMALL STAR
6. SHAFT





Mazda Truck Parts

7. COUNTER GEAR SHAFT

8. INPUT SHAFT

9. 5TH GEAR TURBO

10. GEAR

11. 5TH GEAR

12. GEAR





Suzuki Parts

1. AXLE
2. SLEEVE
3. SLEEVE
4. TOP GEAR
5. SLEEVE
6. INPUT SHAFT





Major Clients

Our goal has always been to provide our customers with a "standard of excellence" in our products and services needed in the spare parts world. we take great pride in providing the quality that our esteemed clientele expects from us. Besides the extensive range that we offer, we can develop items of your specific need, that would match high quality standards and at very reasonable price.

- PM Auto Industries (Pvt.) Ltd.
- Memon Motors (Pvt.) Ltd.
- NJ Auto Industries (Pvt.) Ltd.
- Pirani Engineering (Pvt.) Ltd.
- SS Auto Industry (Pvt.) Ltd.
- SA Auto Industry
- HIT



Registered With

1. LAHORE CHAMBER OF COMMERCE
2. PAAPAM
3. PASPADA



RAZZAQ ENGINEERING WORKS

Plot # 2, Street # 2, Al-Saraj Park, Momin Pura Road, Daroghawala,
Lahore-Pakistan. Cell: 0321-8499336, Tel: +92-42- 36541080,
36558895, 36555067, Fax: +92-42-36532284

E-mail: info@razzaqengg.com

Web: www.razzaqengg.com